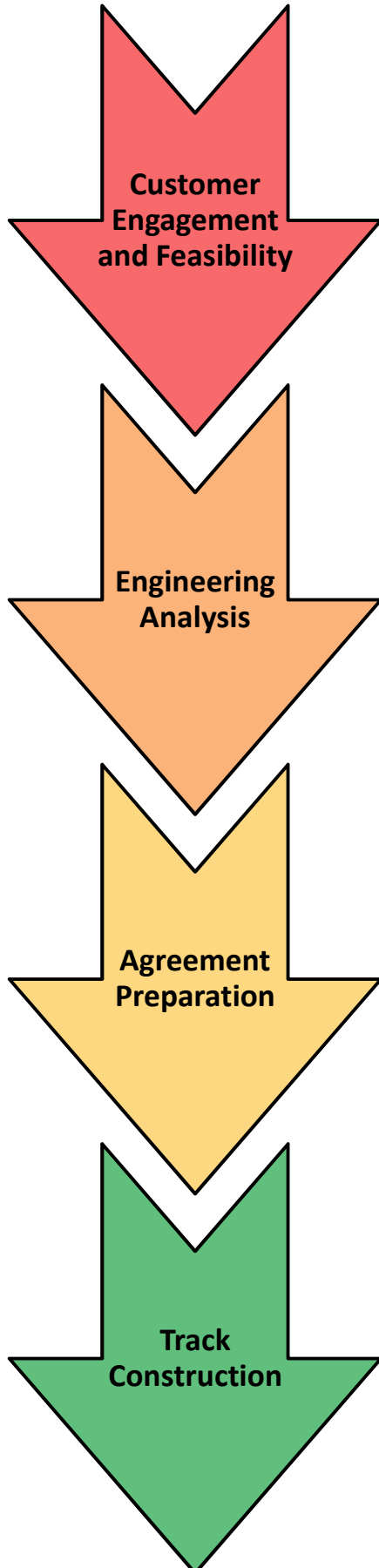


The checklist below provides an example of the steps to place an industrial sidetrack in service. Projected durations are based on past averages and do not imply commitments. Red and bold denotes **Industry** driven tasks which may speed up or delay the timeline. ★ denotes a Decision Point.



- ☐ **Industry** Inquiry - 1 day
- ☐ Site Meeting - 2 weeks
- ☐ NS Concept Plan - 2-3 weeks
- ★ ☐ **Industry** Feedback - 1-2 weeks
- ☐ NS Transportation Review & Approval - 2 weeks

- ☐ **Industry** Prepares Track Plan - 8-12 weeks
- ☐ NS Engineering Review and Approval of Industry Track Plan - 8-12 weeks

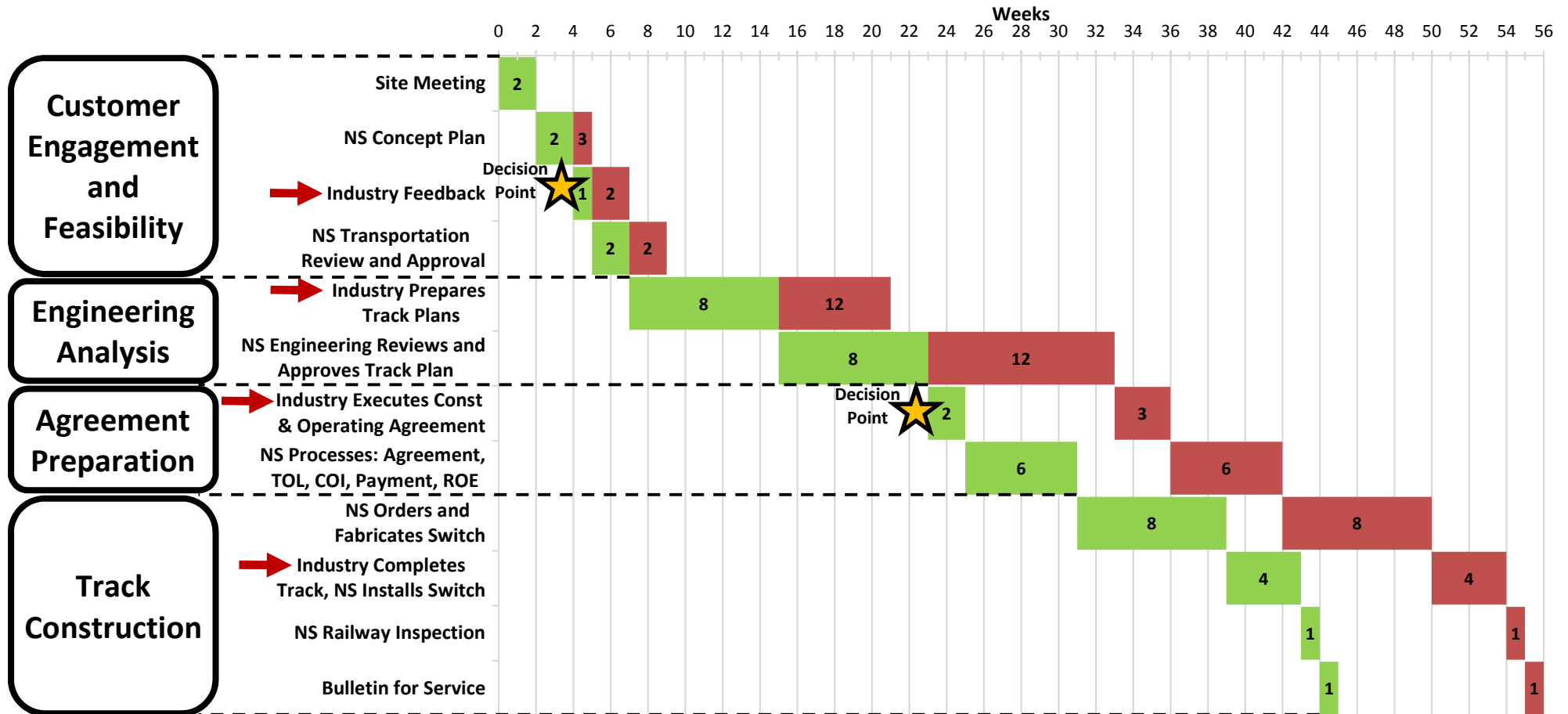
- ★ ☐ **Industry** Executes Construction & Operating Agreement - 2-3 weeks
- ☐ **Industry** Submits Right of Entry Application
- ☐ **Industry** Initiates Industrial Track Construction
- ☐ NS Processes: Agreement, TOL, COI, ROE, Payment - 6 weeks

- ☐ NS Orders and Fabricates Switch/Track Material - 8 weeks
- ☐ **Industry** Stakeout (Right of Entry in Place) - 1 week
- ☐ NS Installs Switch - 4 weeks
- ☐ **Industry** Completes Track Construction
- ☐ NS Railway Inspection - 1 week
- ☐ Bulletin for Service - 1 week



The chart below presents an example timeline to place an industrial sidetrack in service. The total activity duration is shown in each bar as a number of weeks. Red bars show delays to the process.

→ Activities with a red arrow are industry driven and may speed up or delay the timeline.



Note: The proposed schedule shown above assumes cooperation from the Industry on an approved scope of work. Projected durations are based on past averages and do not imply commitments.